

It is better to learn fully about the systems that are required for the purposes other than driving a vehicle.

6 | How to start /stop the engine

The ignition switch is used to start or stop the engine. When starting engine, be sure to use the handbrake as the vehicle may jump forward due to driver misoperation.



How to start the engine



- 1 Be sure to check if the handbrake is on. For AT vehicles, do not forget to press the brake pedal.



MT

- 2 Press the clutch pedal, and check if the gear is in neutral position.



AT

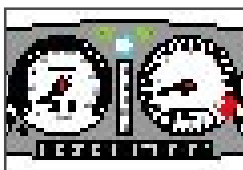
- 3 Visually check if the change lever is in P position.



- 3 Do not press the gas pedal. However, depending on the type of vehicle, the gas pedal may have to be pressed slightly to start the engine.



- 4 Turn the key to the start position, and when the engine starts, release your hand quickly.



- 5 Check if the engine has started by sound, vibration, and warning light (warning light turns off when the engine is started).

How to stop the engine



- 1 Turn the key to the left in order to stop the engine.

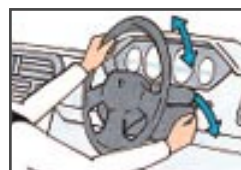
How to remove the key



- 1 By pressing the key, turn to the lock position.

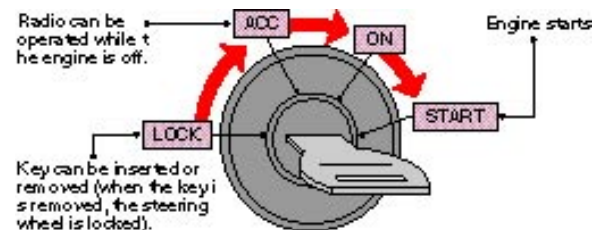
- Key release may differ depending on the type of vehicle.

When the key does not turn



- 1 Turn the key while moving the steering wheel left and right.

Ignition switch positions



- For some types of vehicle, a button is pressed while turning the key to the lock position.